



MILO RANGE v4

Classic System

Hit Detect Setup and Calibration

MILO RANGE v4 – Classic System – Natural Point Hit Detect Setup and Calibration

1. Turn the lights in the room on.
2. Turn on all system components including the projector and the MILO computer
3. Launch the MILO Range Software. The MILO Range Home Screen will appear (Figure 1)

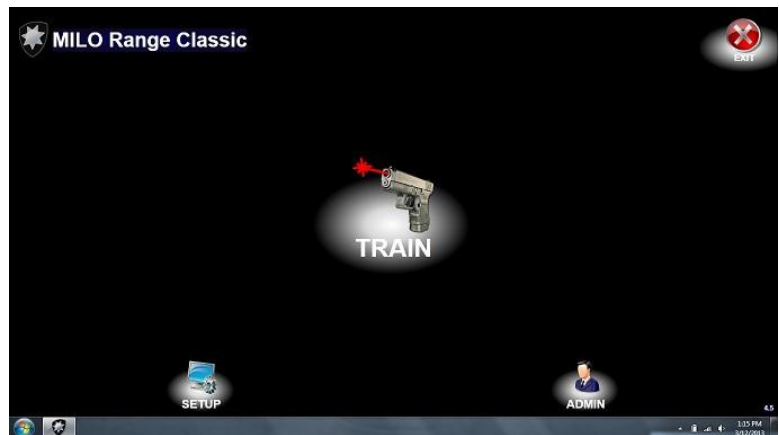


Figure 1

4. Click the setup icon
5. The Setup screen will appear (Figure 2)
6. Click on the Focus/Zoom button located at the bottom of your screen. A test pattern and preview window will appear and display what the camera is viewing down range.

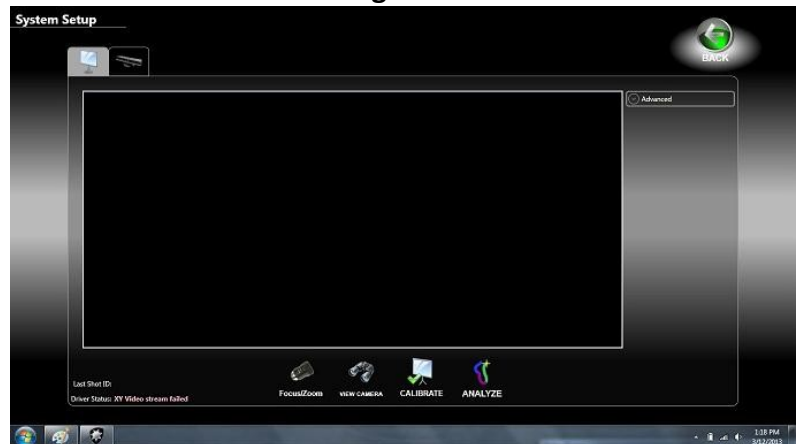


Figure 2

7. Adjust the position of the hit detect camera by physically moving the camera or by adjusting the ball head on the tripod, until the entire test pattern is visible in the preview window. (Figure 3)

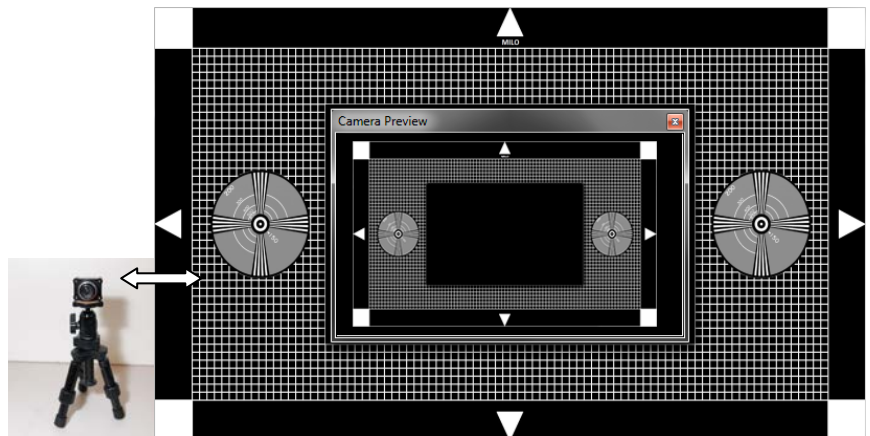


Figure 3

8. Adjust the focus ring on the camera until the preview is as sharp as possible.

FOCUS RING



9. Click on the Cancel button to exit the Focus/Zoom mode
10. Turn the lights off in the room
11. Click the Calibrate button, a white circle will appear in the upper left hand side of the projected screen, this circle will blink and move about the screen, no one should walk in front of the camera at this time
12. When the white and yellow boxes appear (figure 4), the calibration process is complete

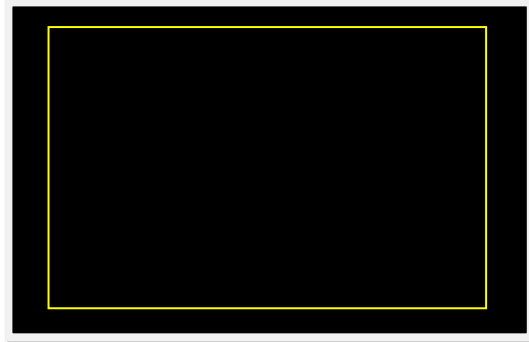


Figure 4

13. Left click on the back button to return to the MILO Range Home Screen

NOTES

- You can activate the calibration wand anywhere inside the yellow box to test the accuracy of the calibration. When you press the calibration wand button, a small cross hair should appear on the white face of the calibration wand. If the cross hair is displayed off of the white face, you may need to repeat the calibration.
- "Auto Calibration" option needs to be checked in the advanced drop down menu located under the setup button. If this is turned off, manual calibration with the wand is expected.
- Clicking on "View Camera" shows what the camera views while the filter is on. Clicking on "Focus Zoom", removes the filter and presents the image on the projector. Adjusting "calibration area" in the advanced section positions the focus/zoom pattern within the area taken by the yellow rectangle.
- If you cancel calibration for any reason, you will need to return and complete the calibration before the system will accurately detect shots again.