

A blue-tinted photograph of a person from the back, looking at a computer screen, serving as a background for the lower half of the page.

SHOOTING RANGE & LIVE FIRE
TRAINING SYSTEMS AND EQUIPMENT



RANGE DESIGN
& EQUIPMENT



MILO Live, formerly Shooting Range Industries, LLC “SRI” is a global provider of state-of-the-art shooting range & live-fire training systems & solutions. We are the original innovators of the modular prefabricated shooting range and are the basis of design for industry standards for live-fire ranges worldwide. All of the products displayed in our literature and website are actual products delivered to customers, not just a concept or artist rendition. We are also the only range company to manufacture all our products, including all steelworks, electrical, and HVAC systems in-house—our competitors do not—this makes us a one stop shop for all your shooting range needs. We have the experience and background to design and build custom products depending on customer demand and needs.

Our expertise in shooting range design combined with our innovative shooting range equipment & accessories meets the growing demands for today’s shooting range industry. Since 1993, the Principles of MILO have been directly involved with designing, manufacturing, and installing over 800 different brick and mortar ranges and over 180 individual modular shooting range systems.



SHOOTING RANGE & LIVE-FIRE TRAINING SYSTEMS

We offer turn-key solutions for live-fire training requirements—commercial off-the-shelf, modular range systems engineered with 100% ballistic containment. Our modular ranges arrive complete, with one lane or expandable with as many lanes as your organization requires to meet mission training requirements. Most organizations order 10 – 14 lanes. Ranges can be configured to a wide-open tactical training layout (Ready Range 90 Variant) with custom lane widths per operator requirements. Either configuration comes complete with shooting stalls, target retrieval systems, bullet traps, programmable lighting, HVAC, and filtration systems.

ORIGINAL INNOVATORS

We are the original innovators of true modular shooting range systems. Our systems are designed to replace the brick and mortar or MILCON projects typically required when building a range. Our modular ranges use minimal moving parts and individual bullet trap systems. Unlike competitor ranges, only one lane in our MILO Live modular range will need to shut down in the event of a system failure. All other lanes will remain operational, making your range uptime far surpass any competitors' product or designs. Your custom range can be delivered and operational in as little as 90 days.

MODULAR RANGE PRODUCTS

Ready Range®

Commercial and law enforcement live-fire training solution

Modular Containerized Small Arms Training Set (MCSATS®)

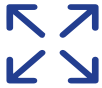
Military live-fire training solution





AFFORDABLE

Significantly reduce pre-construction upfront cost—you will save both time and money and avoid engineering, architecture, extensive site planning, and construction management issues when you purchase a MILO Live modular range.



EXPANDABLE

The engineered design allows for expansion from 40 to 500 feet in length and one or more shooting lanes. Ranges can be customized and configured to expand with your budget and training needs.



CONVENIENT

Eliminate training limitations based on inconvenient training locations, limited operation times, or weather. MILO Live Modular ranges are the unlimited, anytime, live-fire training solution. Our modular ranges can be placed almost anywhere with little site preparation.



FLEXIBLE

Your judgment and firearms training is no longer limited to outside lighting conditions. Low light and nighttime scenario conditions can be simulated at any time, day or night. Our modular ranges can be configured with multiple lighting scenarios with the touch of a button. Additions such as police light bars, smoke machines, scent generators, and many other custom options can create a realistic atmosphere in your live-fire training as the world evolves and your needs change.



ECO-FRIENDLY

OSHA, NIOSH, and EPA regulations for air quality are met with every delivered modular range. The HVAC system maintains constant air flow and negative pressure to ensure that lead, smoke, and airborne particulate are moved away from the shooter. All air passes through a 95-99.99% HEPA filter rack before it is exhausted outside.



SAFE

Our modular ranges incorporate specially selected ballistic and sound dampening materials tested by a third-party to assure safety and function. Precise engineering, development, and material fitment work together to create a Zero Surface Danger Zone (SDZ) required for range safety certification.



CONFIGURATIONS

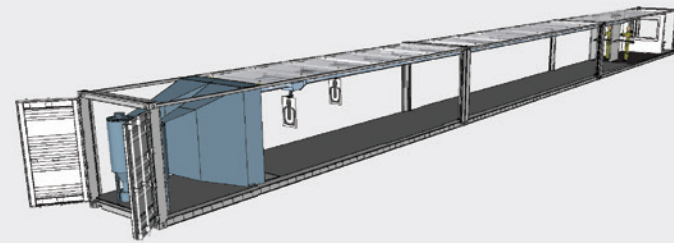
MILO Live has constructed over 180 modular range sites worldwide (over 800 sections). All of our modular ranges can be configured for full compliance with the new UFC 4-179-02 and the older ETL 11-18 shooting range design criteria. All ranges are hand-built within our certified modular manufacturing facility located in North Las Vegas, NV. This guarantees strict adherence to quality control and inspection criteria, ensuring top-level quality for your range requirement. We highly encourage your organization to schedule a facility tour and shoot inside our state-of-the-art demo range and experience the best in the industry.

TWO-LANE

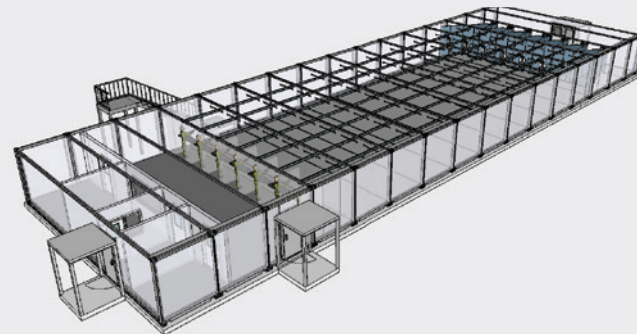
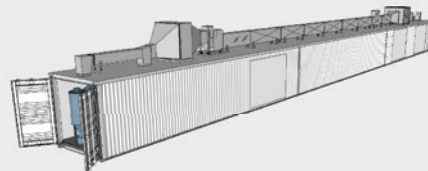
The modular range allows for expandability to increase lane increments as time and budget allow. Range length can even be added if shooting distances require greater length after installation. The two-lane modular range configuration comes complete with up to two shooting lanes, shooting stalls, target retrieval systems, bullet traps, and lighting, and lane widths up to 60”.

READY RANGE® 90 WIDE OPEN

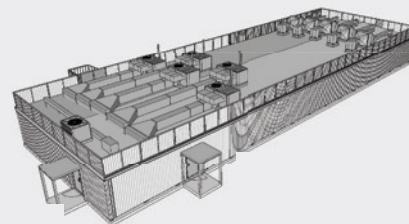
Ready Range 90 comes complete with 5-10 shooting lanes (expandable to 24 lanes), shooting stalls, target retrieval systems, bullet traps, lighting, and lane widths up to 60”. Module interior heights can be delivered up to 9’ tall. Like the two-lane modular ranges, the Ready Range 90 allows for expandability to increase lane increments.



Two-lane modular range configuration
expandable in 2 lane increment widths



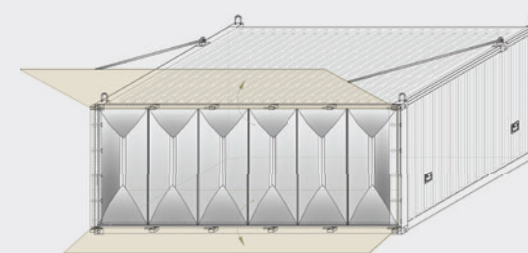
Ready Range 90 configuration



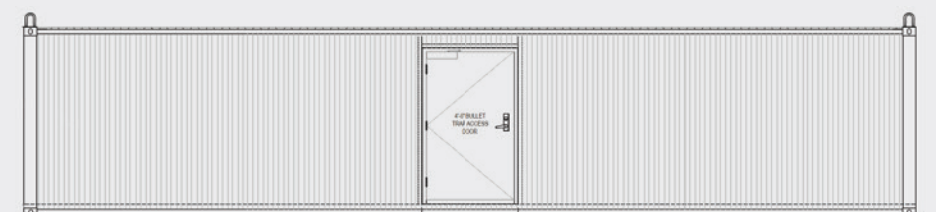
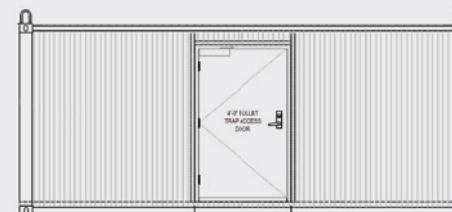
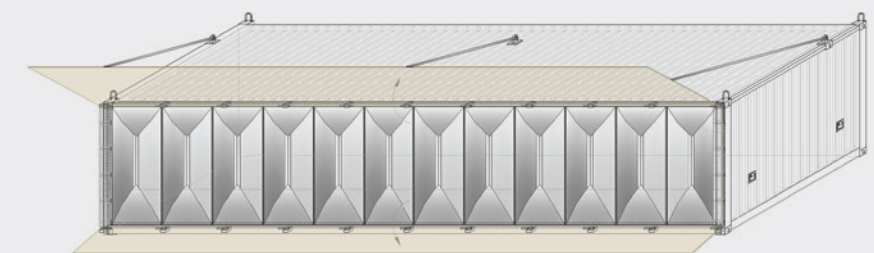
BULLET BANK

MILO Live’s newest product, the “Bullet Bank,” solves EPA and OSHA lead mitigation issues associated with most outdoor ranges. Outdoor ranges are typically very cost effective and quick to build, but lead abatement or lead mining of the earth berm systems typically utilized for outdoor ranges can cost millions. The Bullet Bank retrofit solves this problem by capturing all lead correctly placed on target. Lead mitigation and recycling can be completed in a matter of minutes. The Bullet Bank decelerates the projectile and drops the lead into easy-to-carry 2-gallon containers. You can put the lead recycle value right back into the range, while saving money on the cost of mitigation. The Bullet Bank can eliminate EPA and OSHA contamination concerns on outdoor ranges everywhere. The Bullet Bank is intended to be utilized with a backdrop system. Shots must be placed on or close to the targets for full lead containment.

6 Lane, 20 FT. Bullet Bank



12 Lane, 40 FT. Bullet Bank





CUSTOM RANGE DESIGN

We will work with you to custom design the shooting range that's right for your needs. We offer state-of-the-art custom shooting ranges for military, law enforcement agencies, firearms professionals, and private gun enthusiasts in need of an improved capacity to provide live-fire training. We ensure every shooting range and facility we manufacture is built to the highest industry standards, and all our shooting ranges are designed and tested to ensure ultimate shooter safety.



MODULAR RANGE CUSTOM OPTIONS

All Ready Range components are engineered and fabricated in-house by our professional design teams and metal fabricators. This gives MILO Live control of all processes and quality assurance for Ready Range products and components. We will work with you to design the Ready Range that is right for your needs, offering custom options for our state-of-the-art shooting ranges for military, law enforcement agencies, firearms professionals, and private enthusiasts.

OPTIONS & UPGRADES

- Deployable MCSATS/RR for Air Lift Transportation and Battle Field Mission Prep
- Mobile MCSATS/RR on Trailer Systems that are Removable for Ground Mount
- Forensic Modules with Ballistic Capture Water Tanks and Cotton Boxes
- Tactical Live-fire Trainer Sets with Ballistic Rubber Surfaces
- Ballistic Test Modules with Vehicle Access Doors
- Master Control Rooms
- Classrooms

- Safe Vaulted Weapons Storage
- Fixed Firing Line Trainer Sets
- Ready Rooms
- Swing-out Ballistic Shooting Shields
- Swing out Barricades
- Sniper Live-fire Modules

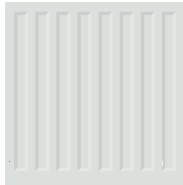
- Ventilated Weapons Cleaning Rooms
- Camera Towers and Ballistic Windows
- Flash Bang Test Rooms
- Sniper Towers
- Bathrooms
- Explosion Proof HEPA Vacuums



MODULAR RANGE CUSTOM COLOR OPTIONS

Our modular ranges are available in a wide variety of exterior color options.

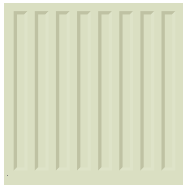
STANDARD COLORS



Shasta White



Parchment



Almond



Sierra Tan



Buckskin



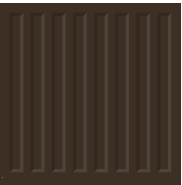
Medium Bronze



Aged Bronze



Copper Brown



Dark Bronze



Terra-Cotta



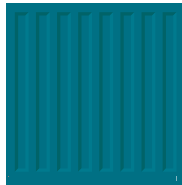
Deep Red



Colonial Red



Burgundy



Bristol Blue



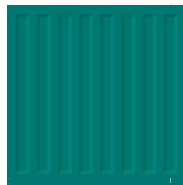
Royal Blue



Patina Green



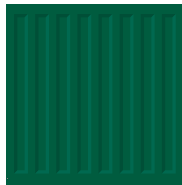
Hemlock Green



Teal Green



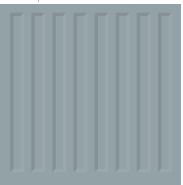
Forest Green



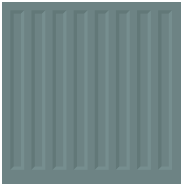
Evergreen



Hartford Green



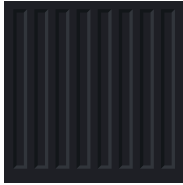
Cityscape



Zinc Grey



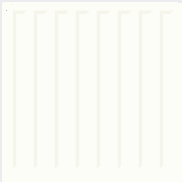
Charcoal Grey



Matte Black

PREMIUM COLORS

Premium colors require a nominal surcharge



Natural White



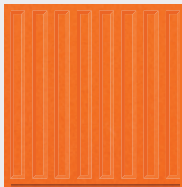
Award Blue

METALLIC COLORS

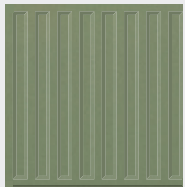
Metallic finishes require a nominal surcharge



Champagne



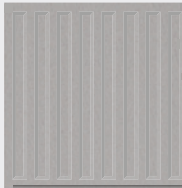
Copper-Cote™



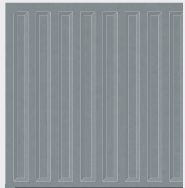
Antique
Copper-Tote



Zinc-Cote™



Lead-Cote™



Prewheathered
Galvalume®



Acrylic-Coated
Galvalume®

NATURAL METAL FINISH

Metal finish requires a nominal surcharge

Acrylic-Coated Galvalume is a coated sheet product that combines corrosion resistance of Galvalume steel sheet with a clear, organic resin applied to the top and bottom sides of Galvalume substrate.



BULLET TRAPS

Simple and easy to maintain, our bullet trap was designed with the end user in mind. The vertical design has no moving parts resulting in almost zero failures or downtime. This is critical to maximize range operation and training. All of our bullet traps are designed and manufactured on-site by our skilled professionals to consistently, reliably, and safely capture projectiles under live-fire training conditions. This configuration allows for the safe removal and disposal of lead and other debris without human contact or environmental damage. The vertical design fixture traps the bullet when entering the rear helical. Bullet containment is achieved as the bullet loses velocity and falls harmlessly through the bottom funnel into the bullet storage container. Airborne particulates are exhausted through a top port directly into the filtration system, resulting in the cleanest environment possible.

BULLET TRAP FEATURES

- Free standing modular design fits through a 3'0" door
- Superior bullet containment
- Direct air filtration exhaust hook up
- All impact plates at 30 degrees or less
- Low installation, maintenance and collection costs
- Small foot print saves on initial building sq. ft. costs
- Pistol, rifle, and .50-caliber models available



SHOOTING STALLS

Like every component of our shooting ranges, our shooting stalls are designed and engineered with the shooter in mind. Our design provides the best shooter orientation, comfort, and protection.

FUNCTIONALITY

Shooters have ample room for firearms training solo or with an instructor in each shooting stall. Individual target retrieval motor controls and sight lights are located in each stall, with a wide, flat, fold-down shooting tray for weapon placement and reloading. Swing-out barricades are also an option. The height of 84" minimizes ejected brass from traveling over the top, while the depth of 48" gives the shooter complete protection. Stalls are also offered in modular configurations for integration of any option, from two-way communications to integrated LED-lighted stalls.

DURABILITY

Shooting stall fabrication consists of double steel-jacketed walls with a high-grade aluminum diamond plate or an optional epoxy coating. We use only top-quality materials and construction methods to ensure top quality and safety.



TARGET RETRIEVAL SYSTEMS

Our simple design, using durable materials, ensures a long life for every target retrieval system we manufacture. Each shooter independently operates the target retrieval system to allow for controlled positioning of each target's distance. We offer a complete line of target retrieval systems, including motor control boxes, retrieval ends, target cars and hangers, stainless steel cable, and drive cords.

Special attention has been given to all metal facings (which are fabricated from hardened steel and cut at less than the standard 45-degree angle iron). The entire system is designed and manufactured to ensure durable and continuous operation for handguns, rifles, and machine guns at 3,600 fps with up to 3,800 ft. lbs. of energy. Rifle Rated upgrades are also available.

TARGET RETRIEVAL OPTIONS

- Individual and centralized computer-controlled turning target rail system
- Fully programmable, automated target systems with onboard programmable lighting, hit sensing, and more
- Various rail systems



HVAC

Air quality is paramount when constructing indoor shooting ranges. With over 35 years in the HVAC industry, we have designed and installed over 5000 HVAC applications and systems and designed over 800 range projects. Our HVAC systems meet OSHA, NIOSH, and EPA regulations for safety.

CAD DESIGN OF HVAC SYSETM

- Recommended air conditioning and heating equipment
- Exhaust fans and blowers
- Filter racks and filters
- Full duct work designs, duct sizing, dampers and register selections.



MILO LIVE

3885 Rockbottom Street
N. Las Vegas, NV 89030
702.362.3623