



» LIVE
TRAINING
SOLUTIONS

» SHOOTING RANGE & LIVE FIRE TRAINING SYSTEMS AND EQUIPMENT

» TABLE OF CONTENTS

ABOUT _____ **3**

READY RANGE SYSTEMS _____ **5**

MODULAR SHOOTING RANGES _____ **5**

BENEFITS OF MODULAR RANGES _____ **7**

CONFIGURATIONS _____ **7**

MODULAR RANGE OPTIONS _____ **9**

CUSTOM RANGE DESIGN _____ **11**

RANGE EQUIPMENT _____ **13**

SHOOTING RANGE EQUIPMENT _____ **14**

BULLET TRAPS _____ **15**

BULLET BANK _____ **19**

SHOOTING STALLS _____ **21**

SHOOTING STALL OPTIONS _____ **23**

TARGET RETRIEVAL SYSTEMS _____ **25**

CEILING BAFFLES _____ **29**

HVAC SYSTEMS _____ **30**

MILO Live, formerly Shooting Range Industries, LLC “SRI,” is a global provider of state-of-the-art shooting ranges and live-fire training systems and solutions. We are the original innovators of the modular prefabricated shooting range and are the basis of design for industry standards for live-fire ranges worldwide. We are also the only range company to manufacture all our products, including all steelworks, electrical, and HVAC systems, in-house. We have the experience and background to design and build custom products depending on customer demand and needs.

Our expertise in shooting range design, combined with our innovative shooting range equipment & accessories, meets the growing demands of today’s shooting range industry. Since 1993, the principles have been directly involved with designing, manufacturing, and installing over 800 brick-and-mortar ranges and 180 individual modular shooting range systems.

SHOOTING RANGES

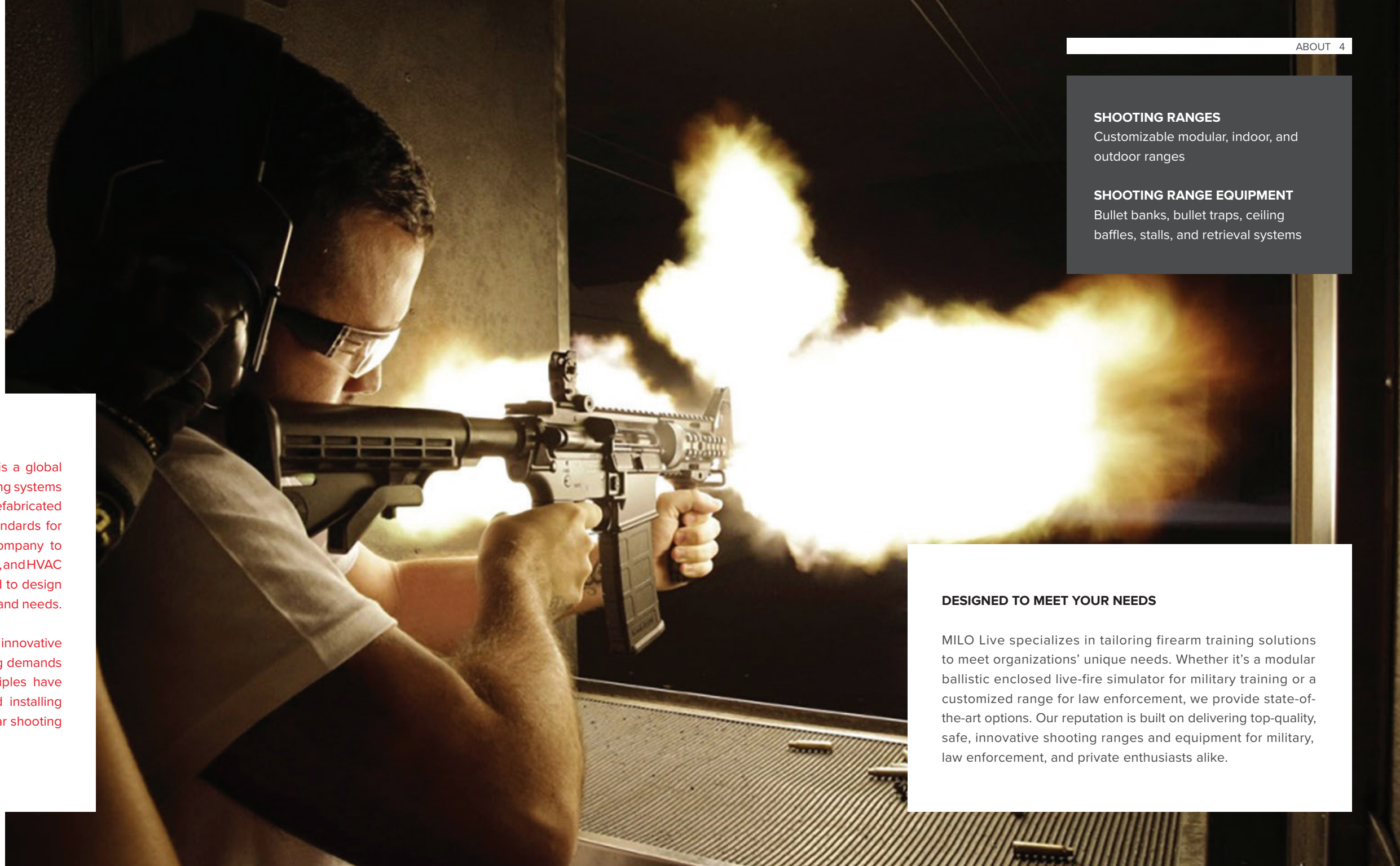
Customizable modular, indoor, and outdoor ranges

SHOOTING RANGE EQUIPMENT

Bullet banks, bullet traps, ceiling baffles, stalls, and retrieval systems

DESIGNED TO MEET YOUR NEEDS

MILO Live specializes in tailoring firearm training solutions to meet organizations’ unique needs. Whether it’s a modular ballistic enclosed live-fire simulator for military training or a customized range for law enforcement, we provide state-of-the-art options. Our reputation is built on delivering top-quality, safe, innovative shooting ranges and equipment for military, law enforcement, and private enthusiasts alike.





» READY RANGE SYSTEMS

MODULAR SHOOTING RANGES

TURN-KEY SOLUTION

MILO Live offers turn-key solutions for live-fire training requirements—commercial off-the-shelf, modular range systems engineered with 100% ballistic containment. Our modular ranges arrive complete, with one lane or expandable with as many lanes as your organization requires to meet mission training requirements.

Ranges can be configured to a wide-open tactical training layout (Ready Range 90 Variant) with custom lane widths per operator requirements. Each configuration comes complete with shooting stalls, target retrieval systems, bullet traps, programmable lighting, HVAC, and filtration systems.

FEATURES AND BENEFITS

- Constructed for indoor live-fire shooting
- Prefabricated Ready Range delivered to any location
- Fabricated for maximum durability and safety
- Meets current environmental and safety regulations
- Optimal shooter training area and space
- Zero contamination to the outside environment
- Minimal maintenance and range downtime
- Minimal installation time
- Weekly, monthly, and yearly rental programs available
- Ready Range typical lead times 15-180 days
- Zero surface danger zone



ALL FABRICATION IS DONE IN HOUSE

All of our range components are fabricated in-house by our metal fabricators and engineered with specialty metals and techniques that allow us to maintain the highest quality level for all our products. All materials are certified by an independent laboratory and designed to meet the strictest standards for value and long-term durability.



BENEFITS OF MODULAR RANGES



01 MOBILE

The Ready Range enables users to relocate the entire shooting range anytime, safeguarding your investment from budget cuts and ensuring resources are where you need them most.



02 EXPANDABLE

The Ready Range design enables flexible range configurations and expansion, accommodating 2 to 24 lanes or more with shooting distances from 6m to 100m.



03 ECO-FRIENDLY

The Ready Range complies with US and international air quality regulations for shooting ranges. The ventilation systems and bullet traps ensure the highest level of protection for air quality and ground contamination.



04 CONVENIENT

The Ready Range eliminates training constraints caused by limited operation times, inconvenient locations, or adverse weather. It provides an unrestricted, anytime live-fire training solution with minimal site preparation required.



05 ECO-FRIENDLY

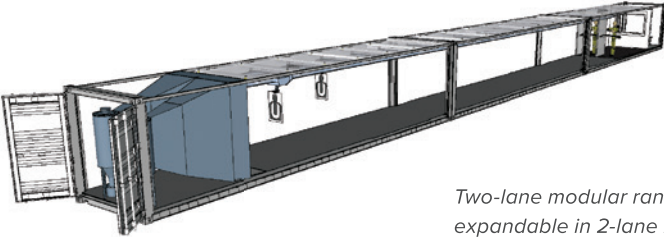
Ready Ranges incorporate specially selected ballistic and sound-dampening materials tested by a third party to assure safety and function. Precise engineering, development, and material fitment work together to create a Zero Surface Danger Zone (SDZ) required for range safety certification.

CONFIGURATIONS

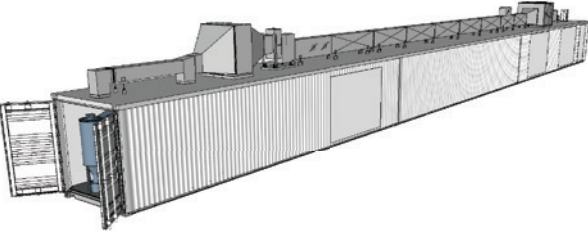
MILO Live has constructed over 180 modular range sites worldwide (over 800 sections). All of our modular ranges can be configured for full compliance with the new UFC 4-179-02 and the older ETL 11-18 shooting range design criteria. All ranges are hand-built within our certified modular manufacturing facility located in North Las Vegas, NV. This guarantees strict adherence to quality control and inspection criteria, ensuring top-level quality for your range requirement. We highly encourage your organization to schedule a facility tour and shoot inside our state-of-the-art demo range to experience the industry's best.

TWO-LANE

The modular range allows for expandability to increase lane increments as time and budget allow. Range length can even be added if shooting distances require greater length after installation. The two-lane modular range configuration comes complete with up to two shooting lanes, shooting stalls, target retrieval systems, bullet traps, lighting, and lane widths up to 60".

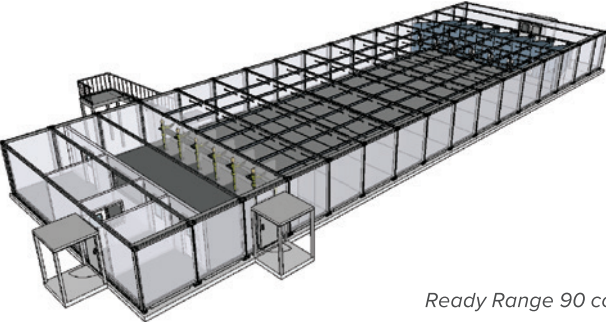


Two-lane modular range configuration expandable in 2-lane increment widths

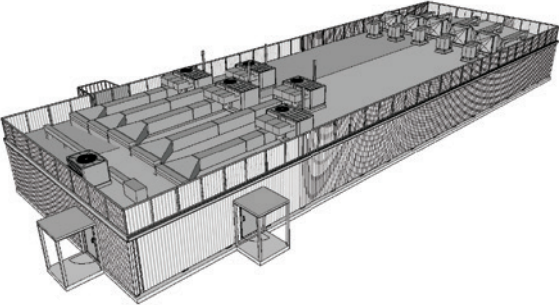


READY RANGE® 90 WIDE OPEN

Ready Range 90 comes complete with 5-10 shooting lanes (expandable to 24 lanes), shooting stalls, target retrieval systems, bullet traps, lighting, and lane widths up to 60". Module interior heights can be delivered up to 9' tall. Like the two-lane modular ranges, the Ready Range 90 allows for expandability to increase lane increments.



Ready Range 90 configuration



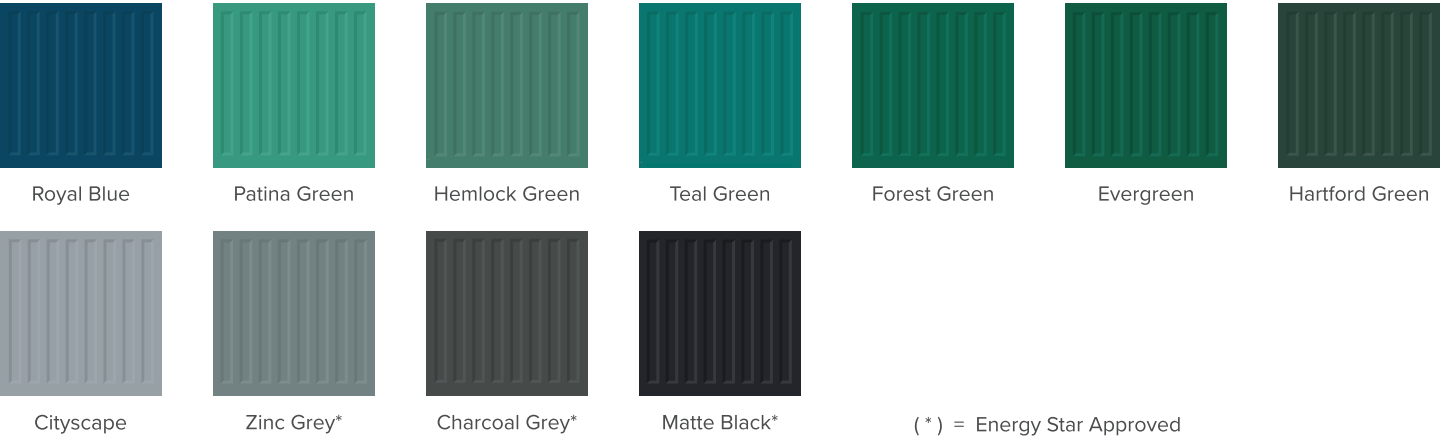
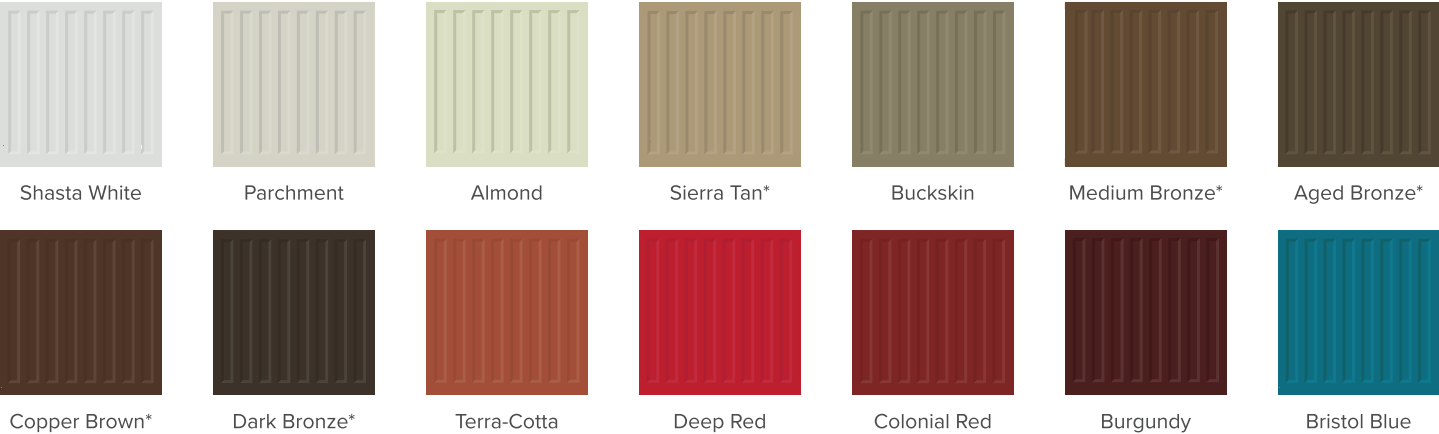
MODULAR RANGE OPTIONS

- Deployable for Air Lift Transportation and Battle Field Prep
- Forensic Modules with Ballistic Capture Water Tanks and Cotton Boxes
- Ballistic Test Modules with Vehicle Access Doors
- Master Control Rooms
- Classrooms

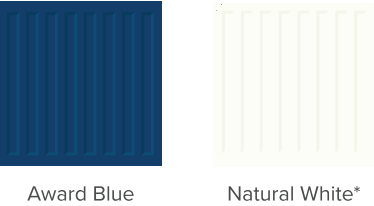
- Ventilated Weapons Cleaning Rooms
- Camera Towers and Ballistic Windows
- Flash Bang Test Rooms
- Sniper Towers
- Bathrooms

- Removable Mobile Trailer Systems for Ground Mounting
- Tactical Live-fire Trainer Sets with Ballistic Rubber Surfaces
- Explosion Proof HEPA Vacuums
- Safe Vaulted Weapons Storage
- Fixed Firing Line Trainer Sets

- Ready Rooms
- Swing-out Ballistic Shooting Shields
- Swing out Barricades
- Sniper Live-fire Modules
- MILO Range simulator



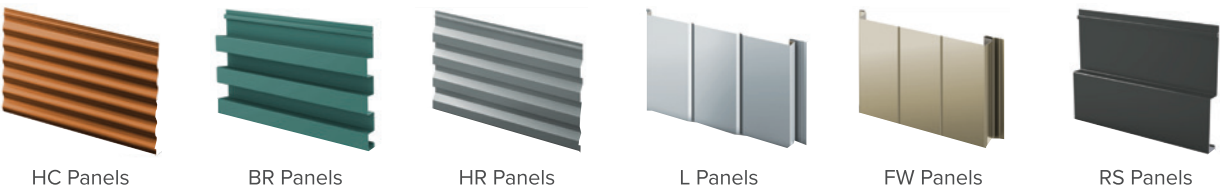
PREMIUM COLORS
Nominal Charge



MODULAR RANGES: BUILT TO LAST

MILO Modular Ranges offer at least twice the corrosion resistance and service life of traditional galvanized steel, proven through extensive field tests. Every system is engineered for strength, efficiency, and durability, offering long-lasting, maintenance-free protection from the elements. Its unique aluminum-zinc alloy coating provides superior edge protection. It combines the durability of aluminum with the galvanic protection of zinc, while environmentally friendly finishes achieve energy efficiency and sustainable design.

PANEL CONFIGURATIONS





CUSTOM RANGE DESIGN

We will work with you to custom-design the shooting range to suit your needs. We offer state-of-the-art custom shooting ranges for military, law enforcement agencies, firearms professionals, and private gun enthusiasts needing an improved capacity to provide live-fire training. We ensure every shooting range and facility we manufacture is built to the highest industry standards, and all our shooting ranges are designed and tested to ensure ultimate shooter safety.



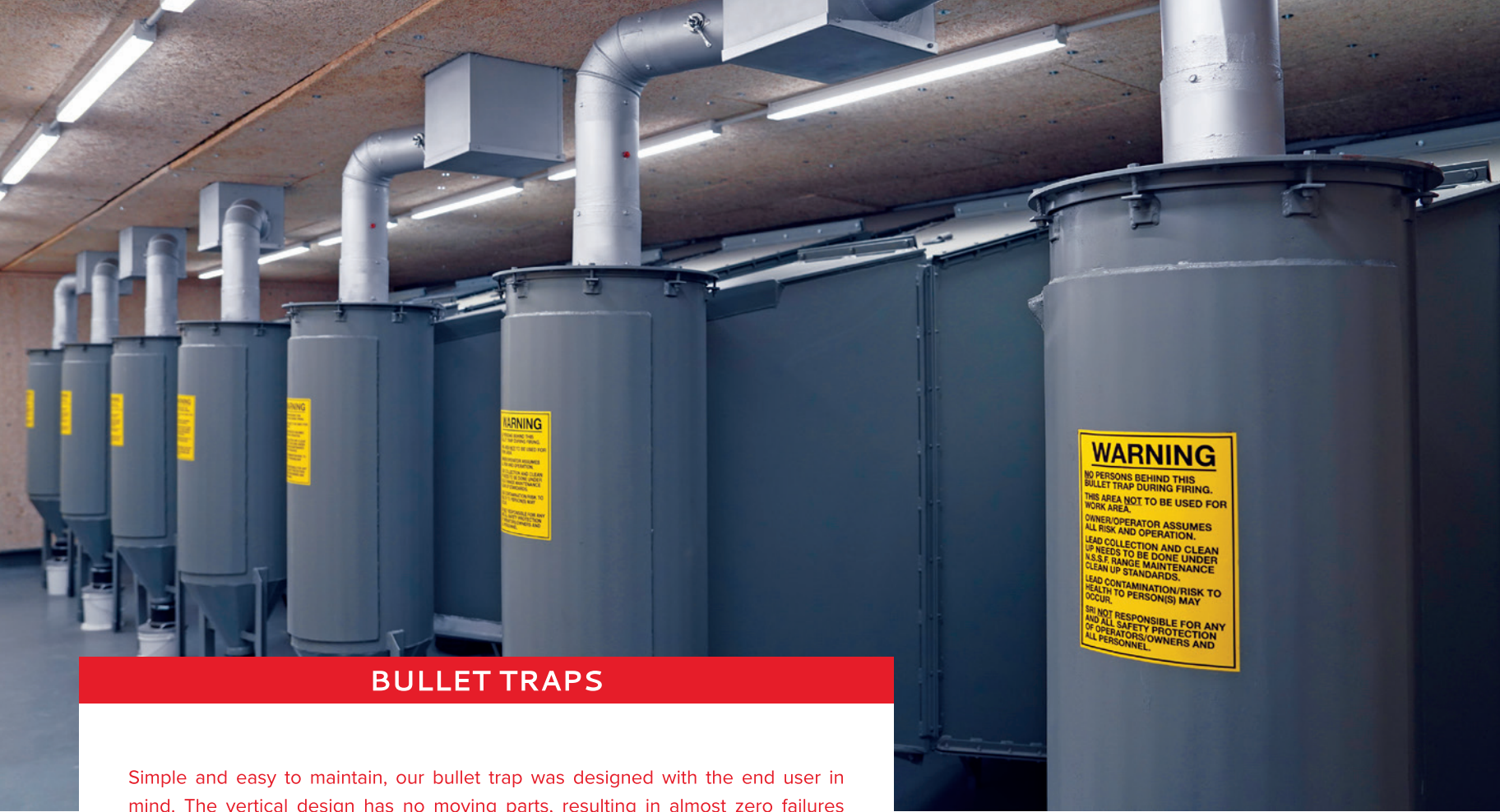
» RANGE EQUIPMENT

ENSURING SAFETY AND PRECISION:
Our Commitment to High-Quality Shooting Range Equipment

SHOOTING RANGE EQUIPMENT

EQUIPMENT FOR YOUR INDOOR OR OUTDOOR RANGE

MILO Live specializes in providing premium indoor and outdoor shooting ranges and equipment crafted to exceed industry standards. Our unwavering commitment to safety, comfort, and quality drives every aspect of our work. With each custom shooting range project, we prioritize ensuring shooter safety and comfort. Throughout the design and construction process, we prioritize features such as bullet traps, lead safety-maximizing HVAC systems, and shooting lanes and stalls layout. By focusing on these critical elements, we aim to create an environment where shooters can fully concentrate on their marksmanship and be confident in the reliability and security of our equipment. At MILO Live, we're dedicated to meeting the evolving needs of today's shooting ranges while upholding the highest standards of excellence.



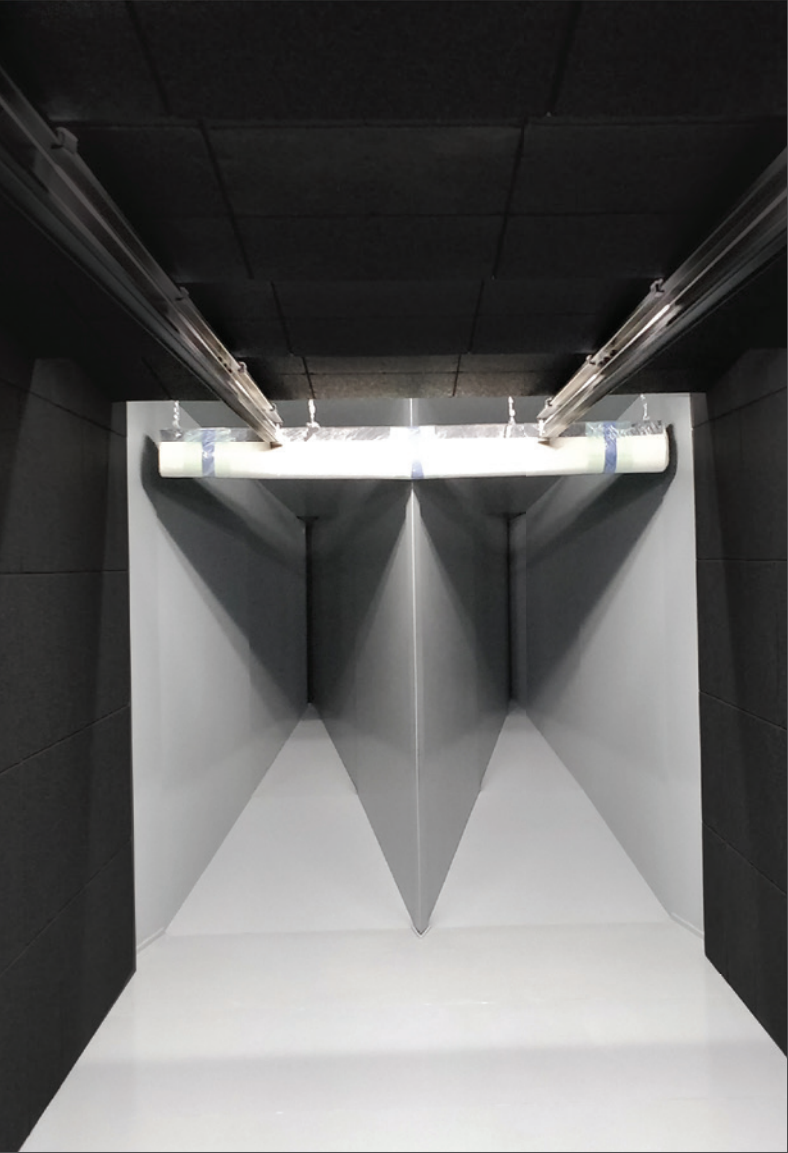
BULLET TRAPS

Simple and easy to maintain, our bullet trap was designed with the end user in mind. The vertical design has no moving parts, resulting in almost zero failures or downtime. This is critical to maximize range operation and training. All of our bullet traps are designed and manufactured on-site by our skilled professionals to consistently, reliably, and safely capture projectiles under live-fire training conditions. This configuration allows for the safe removal and disposal of lead and other debris without human contact or environmental damage. The vertical design fixture traps the bullet when entering the rear helical. Bullet containment is achieved as the bullet loses velocity and falls harmlessly through the bottom funnel into the bullet storage container. Airborne particulates are exhausted through a top port directly into the filtration system, resulting in the cleanest environment possible.



BULLET TRAP FEATURES

- Free-standing modular design fits through a 3'0" door
- Superior bullet containment
- Direct air filtration exhaust hook-up
- All impact plates at 30 degrees or less
- Low installation, maintenance, and collection costs
- Small footprint saves on initial building sq. ft. costs
- Pistol, rifle, and .50-caliber models available
- No additional media to sift or replace
- No risk of fire, with lead safely captured





The rifle bullet trap is designed to stop all bullets fired from the firing line. It is constructed of a special heat-treated steel, AR 500 armor plate, capable of withstanding all suitable ammunition. Specially designed frames support the impact plates at a low angle away from the shooters. This low angle, combined with the calculated thickness of the high-strength steel, virtually eliminates the wear on the plates from high-velocity rounds. Properly directed shots slide or are redirected up the plates at a shallow angle into a Vertical Helical Chamber where all remaining energy of the projectile is expended. The spent projectile travels harmlessly into plastic containment buckets behind the bullet traps for easy removal and replacement.

The trap includes guards or fairing attachments for the floor, sidewalls, and ceiling to direct low, wide, or high shots into the trap. It is suitable for all small arms, shoulder-fired or benched. The trap assemblies are centered on each shooting position, generally matching the quantity and spacing of the firing positions.



The bullet trap does not require any secondary media such as sand, oil, rubber, or water to defeat the projectiles safely, resulting in a much cleaner trap environment that is easy to maintain.

AIR COLLECTION LID (ACL)

The ACL is designed to capture airborne lead and other material particles created by rounds impacting the trap. It collects air from the front of the trap and directs it through HEPA filters, which can be easily replaced. Placing the bullet

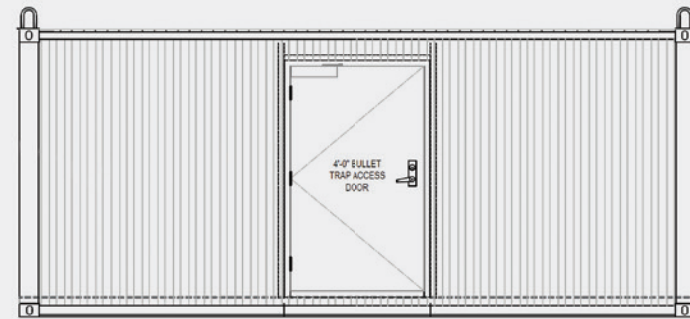
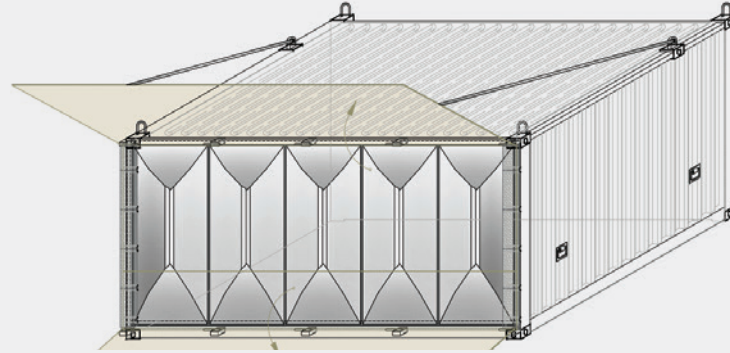
RIFLE-RATED	
Length	95½ in.
Height	91½ in.
Width	41¾ in. Nominal, adjusted per range layout requirements
Maximum Velocity of Bullets	3,600 FPS of energy
Maximum Weight	500 Grains
Permissible Bullets	All jacketed, lead or frangible, semi and non-jacketed rounds
Strictly Prohibited Bullets	Armor Piercing, Incendiary and Steel Core
Primary impact plates of heat-treated steel overlap to protect leading edges toward the firing line.	
Thickness	3/Sin. - 1/2in.
Hardness	450-510 Brinell

PISTOL-RATED	
Length	7ft. (2.13m)
Height	7ft.-6in. (2.28m)
Width	3ft.-6in. (1.07m); Nominal, adjusted per range layout requirements
Maximum Velocity of Bullets	2,200 FPS (670 MPS)
Maximum Weight	500 Grains
Permissible Bullets	All jacketed, lead or frangible, semi and non-jacketed rounds
Strictly Prohibited Bullets	Armor Piercing, Incendiary and Steel Core
Primary impact plates of heat-treated steel overlap to protect leading edges toward the firing line.	
Thickness	1/4in. - 1/2in.
Hardness	450-510 Brinell

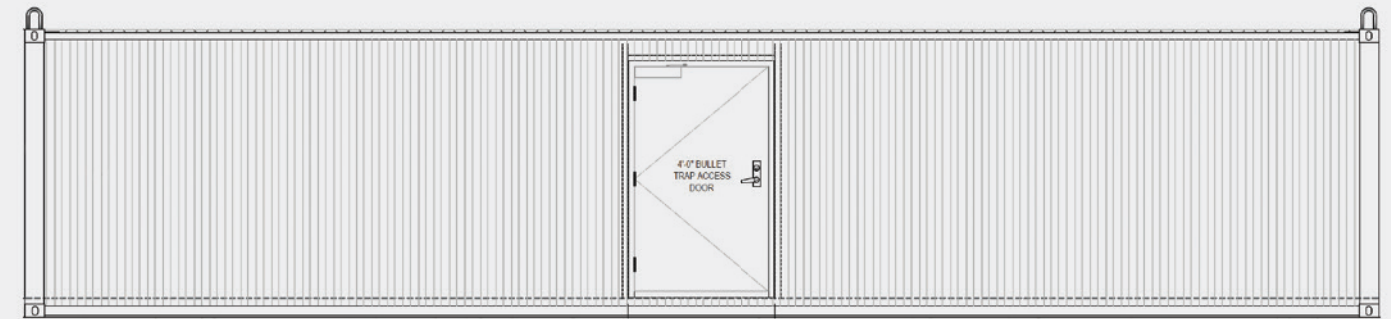
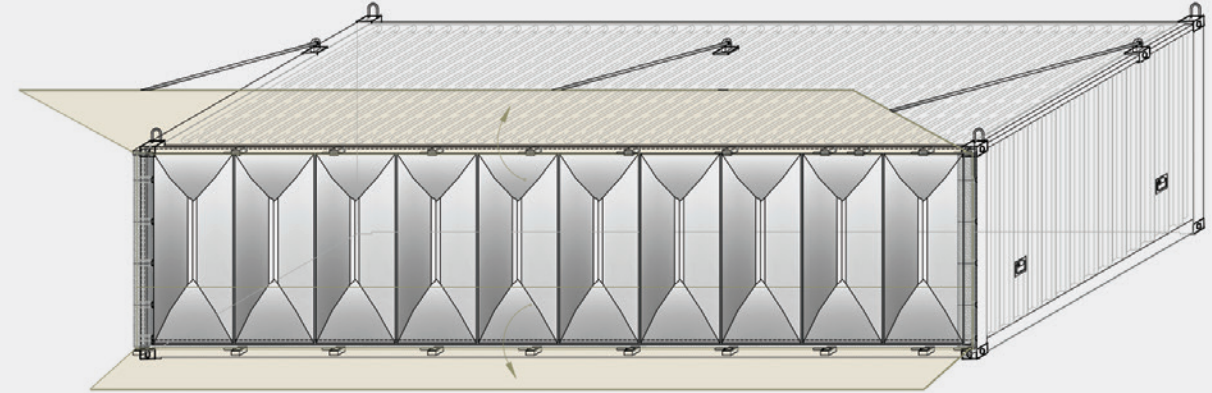
BULLET BANK

MILO Live's newest product, the "Bullet Bank," solves EPA and OSHA lead mitigation issues associated with most outdoor ranges. Outdoor ranges are typically very cost-effective and quick to build, but lead abatement or lead mining of the earth berm systems typically utilized for outdoor ranges can cost millions. The Bullet Bank retrofit solves this problem by capturing all lead correctly placed on target. Lead mitigation and recycling can be completed in a matter of minutes. The Bullet Bank decelerates the projectile and drops the lead into easy-to-carry 2-gallon containers. You can put the lead recycle value back into the range while saving money on the cost of mitigation. The Bullet Bank can eliminate EPA and OSHA contamination concerns on outdoor ranges everywhere. The Bullet Bank is intended to replace a dirt berm trap and keep lead from entering the ground or berm, so no further lead remediation or expense would be required.

Five-Lane, 20 FT. Bullet Bank



Ten-Lane, 40 FT. Bullet Bank



SHOOTING STALLS

Like every component of our shooting ranges, our shooting stalls are designed and engineered with the shooter in mind. Our design provides the best shooter orientation, comfort, and protection.

Shooters have ample room for firearms training solo or with an instructor in each shooting stall. Individual target retrieval motor controls and sight lights are located in each stall, with a wide, flat, fold-down shooting tray for weapon placement and reloading. Swing-out barricades are also an option. The height of 84" minimizes ejected brass from traveling over the top, while the depth of 48" gives the shooter complete protection. Stalls are also offered in modular configurations to integrate any option, from two-way communications to LED-lighted stalls.



FUNCTIONAL & DURABLE

The primary function of the Shooting Stall is to organize the firing line into defined shooting points while maintaining good range visibility and providing the shooter with the features necessary to optimize training. The stalls are furnished with drop countertops so that each shooter may use their shelf when needed or drop it out of the way for prone shooting and action simulation courses. The slim, low-profile, and sleek design promotes proper airflow inside the range.

The stalls are suitable for use with all standard service loads of handgun ammunition, including 2000 fps and/or 2200 ft. lbs. of kinetic energy.

Rifle-rated Stalls: AR500 armor core for complete shooter protection from top to bottom and the entire length of the walls.

Our shooting range stalls consist of double steel jacketed walls covered with durable diamond plate aluminum. All exposed edges are covered with a durable steel trim for easy maintenance and operation, giving your facility a high-quality, high-tech look.

Lead and gunpowder will not penetrate and cause potential fire or safety hazards. After years of service, the finish can be buffed out like new.

All Armor Piercing (AP), incendiary, or steel core rounds are prohibited.

SHOOTING STALL OPTIONS

ALUMINUM TREAD STALLS

Aluminum is the standard and most versatile cleaning material. It does not absorb lead or retain gunpowder, making it a safe, clean, long-term solution that minimizes maintenance and safety concerns.

RUSTED PATINA STALLS - OPTIONAL

The rusted patina option is a custom variable finish applied as an art form to give the steel a deeper, more natural wood grain look. The finish varies slightly in density and color variation to offer a custom finish.

BALLISTIC GLASS STALL - OPTIONAL

The ballistic glass stalls are superior to others in the industry. Unlike Lexan or polycarbonate alternatives that scratch and fade over time, compromising visibility through the stall, our glass stalls maintain clarity and durability.


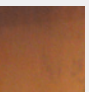

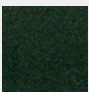

COATING OPTIONS

The stall walls and shooting trays can be coated to enhance durability and add a black finish. The coating has a high Shore D hardness rating, offering excellent impact resistance and superior tensile strength (up to 6,600 psi), resulting in outstanding abrasion resistance with a complete seal.

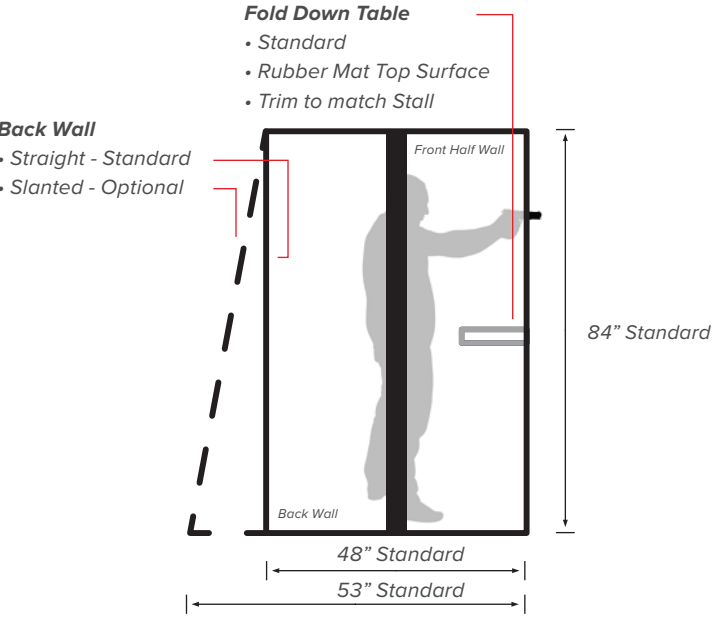
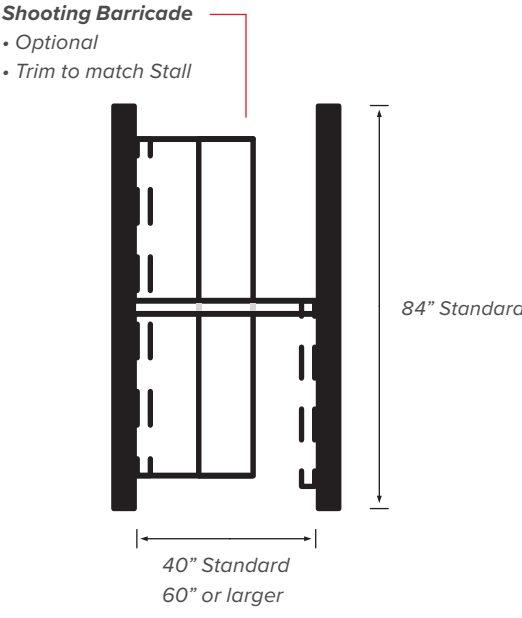
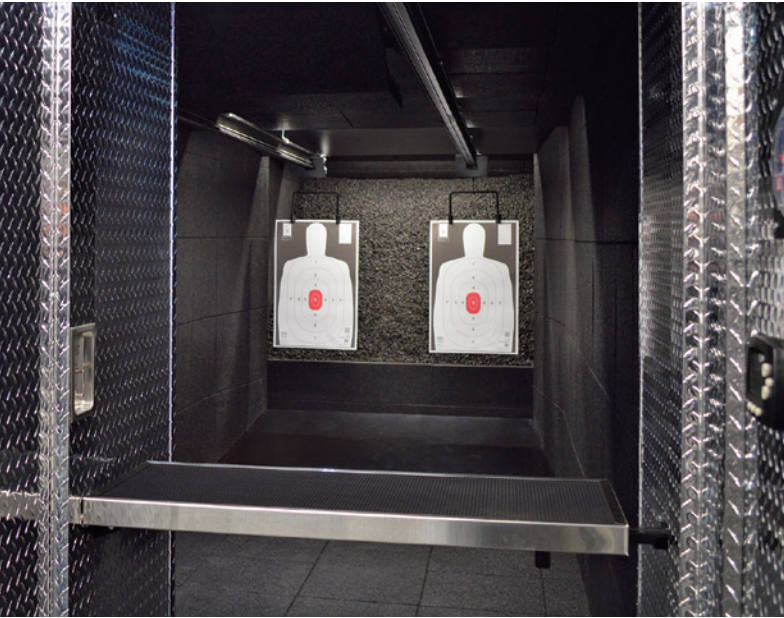
Gardit's high tensile strength will prevent wear and tear on the shooting stall surface. 4000 lbs/sq.in.

55 Shore D Gardit provides tough, hard industrial protection for rugged applications.

STALL COATING & TRIM OPTIONS AVAILABLE

	 Aluminum Thread	 Rusted Patina	 Ballistic Glass	 Black Gardit	 Stainless Steel
Front Half Stall Wall	S	---	---	O	---
Back Half Stall Wall	S	---	O	O	---
Shooting Barricade	S	---	---	O	---
Trim	S	O	---	O	O

(S) = Standard (O) = Optional (---) = Not Available



TARGET RETRIEVAL SYSTEMS

SUSPENDED WIRE, MONORAIL, AND WIRELESS

Our streamlined design, crafted with durable materials, guarantees the longevity of each target retrieval system we produce. Each shooter can independently control the target retrieval system, enabling precise positioning of target distances. We provide a comprehensive range of target retrieval systems, including motor control boxes, retrieval ends, target cars and hangers, stainless steel cables, and drive cords.

Special attention has been given to all metal facings (which are fabricated from hardened steel and cut at less than the standard 45-degree angle iron). The entire system is designed and manufactured to ensure durable and continuous operation for handguns, rifles, and machine guns at 2200 fps with up to 2000 ft. lbs. of energy. Rifle -rated upgrades are also available.

TARGET RETREIVAL OPTIONS

- Individual and centralized computer-controlled turning target rail system
- Fully programmable, automated target systems with onboard programmable lighting, hit sensing, and more
- Various rail systems

ALL RETRIEVAL SYSTEMS COME COMPLETE WITH:

- Motor control boxes
- Retrieval ends
- Target cars
- Target hangers
- Stainless steel cable
- Stainless steel drive cord
- Pre-constructed wiring harnesses/switches
- Individual stall-mounted control

Standard MILO Live Target Retrieval Systems are robust, cost-efficient, and easy to install. They are available as either suspended-wire trolley cable systems or hard-rail monorail systems. Both designs are independently manually operated at the lane to set target distance and retrieval and come standard with LED sight lights.



ADVANCED PULSAR™ TARGET
RETRIEVAL SYSTEMS

MILO Live's PULSAR™ target retrieval systems stand out as a premier solution. This patented, wireless charging, self-propelled, and self-mon- itoring system operates without cables or bus- bars, supporting lane lengths of up to 100+ yards. Each self-contained, programmable target carri- er offers pre-set or customizable courses of fire, multiple target movements, lighting options, and target pivots—ideal for friend/foe and shoot/don't shoot training. The shooter or range master can control the wireless operation via a touchscreen.

The PULSAR system is unique in that it is a has- sle-free, programmable target retrieval system suitable for full-day operation at both commercial and private ranges. It supports semi-automatic and fully automatic firearms, handling rounds up to 3600 fps and 3800 ft. lbs. of energy. The self-propelled carriers feature contactless

charging at the home position and self-monitor for issues like debris on the track. Maintenance is straightforward, involving simple wipe-downs of the carriers. Quick-mount carriers are easily replaceable if damaged.

Key features include a speed of up to 19.6 feet per second and onboard target lighting, making long lane lengths practical. The system supports independent wireless touchscreen operation for each carrier, controllable by the shooter on a per-lane basis or by the range master, who can control up to 48 lanes and configure them for si- multaneous exercises or competitions. Custom courses of fire can be programmed for any car- rier in the PULSAR system and include multiple target movements, lighting changes, and target pivots to 90°, 180°, and 360° with edging, as well as “flinch fakes.”



CONTROL METHODS
Master and Individual
Touch Pads



SPEED
Max 19.6 Feet/Second



TURNING MODES
90, 180, 360° with
random edging



BALLISTIC RATING
Up to 3/8" AR500
Rating Rifle .308

	100	200	300	400
Wireless Control	X	X	X	X
Wireless Charging	X	X	X	X
Up to 19.6ft / second speed	X	X	X	X
Rifle Ballistic Rating	X	X	X	X
Feet, Yard & Meter Support	X	X	X	X
Lane Tablet Operation	X	X	X	X
Master Control Operation	O	O	O	O
Manual Distance Shooting	X	X	X	X
Programmable Course Operation	---	X	X	X
LED Lighting on Target	---	X	X	X
Weapon sight lights at firing position	---	X	X	X
Programmable LED lane marker	---	X	X	X
Programmable LED target car accent lighting	---	X	X	X
Target Edge, Turn, Fake, Friend/Foe	---	X	X	X
Real-time camera view of target	---	---	X	X
Automated shot detection & scoring	---	---	---	X

(O) = Optional (X) = Included (---) = Not Available

CEILING BAFFLES

Our quality ceiling baffles are fabricated with pre-punched and welded suspension brackets. Our CAD-Designed plate spacing ensures that all projectiles are directed downrange, ensuring ultimate safety while protecting lighting and HVAC fixtures.



FEATURES

All suspension cables and hardware are included for quick and straightforward installation. Each ceiling baffle system is carefully designed and fabricated with adjustable guards to accommodate specific building width requirements.



HVAC SYSTEMS

Optimal air quality is crucial in indoor firing range construction. With over 35 years of experience, MILO Live's engineering team has designed and installed over 500 HVAC systems and 800 tactical rifle and handgun range projects. Our HVAC systems comply with OSHA, NIOSH, and EPA safety regulations.



WE PROVIDE YOU WITH A COMPLETE DESIGN OF THE FOLLOWING:

- Recommended air conditioning and heating equipment selections
- Exhaust fans and blowers
- Filter racks and filters
- Full ductwork designs, duct sizing, dampers, and register selections

MILO LIVE

3885 Rockbottom Street

N. Las Vegas, NV 89030

Phone: 702.362.3623

milorange.com

